



# SEA HORSE MIDDLE EAST MARINE SERVICES L.L.C

Offshore Contractors/Oil Field Marine Logistics

Room 5-1 5<sup>th</sup> Floor Prestige Tower Mohd. Bin Zayed City, Musaffah, Abu Dhabi, UAE

Tel. No. 02 441 7144 Fax No. 02 441 7195 Website: [www.shmemarine.com](http://www.shmemarine.com)

## MV "CY ARABIAN" (10,500DWT– Self Propeller Deck Ship)

### OWNER

SEARAK MARINE S.A.

### OPERATOR

SEA HORSE MIDDLE EAST MARINE SERVICES

### CLASS – KR

### FLAG – Panama

### BUILT

Sainty Ship Building, Yangzhou, China 2015

### CALL SIGN / OFFICIAL NO / IMO NO

H3EA / 9665724

### MAIN PARTICULARS

LOA : 106.02M

Breadth (MID) : 25.00M

Depth (MID) : 8.00M

Summer Draft : 5.90M

Deck Space : 1491.6m<sup>2</sup> (22.6x66)

GRT : 5770 MT

Deck Load : 10 MT/SQM

DWT : 10500 T

### CREW

16 Person

### PERFORMANCE

Operational Speed : 9-10 Knots

Type of fuel : IFO 120, LSMGO

Daily Consumption: At Sea 10ton / Day for IFO 120 & 0.5 Ton for LSMGO

### TANK CAPACITIES

H.F : 219.2.7M<sup>3</sup>

F.W. : 134.6 M<sup>3</sup>

BALLAST : 5,307.2 M<sup>3</sup>

LO : 120.1 M<sup>3</sup>



### PROPULSION & GENERATION

Engines : 2 x ZIBO LB8250 of 1470 KW each @ 750 rpm

BHP : 4,000 BHP

Gearboxes : 2 x GWC45.49 Reduction Gear boxes of 3.9474:1 ratio

Generators : 2 x Cummins CCFJ200J-W 200KW@1500rpm

E.Generator : 1 x Cummins CCFJ64Y-W 64kw 400 V/3phase/50 HZ

### ENGINE ROOM MACHINERY

F.W. Pump : 1 x 2.2.kw /0.4 MPa

S.W. Pump : 2 x ESNN-100M- 45

Bilge/Ballast Pump : 2 x (415m<sup>3</sup> /hr x  
: 2.7kg/cm<sup>2</sup>x55kwx1450 rpm

### COMMUNICATION

E-Mail : [cyarabian@sea-one.com](mailto:cyarabian@sea-one.com) (at Sea)

[cyarabian@gmail.com](mailto:cyarabian@gmail.com) (UAE)

Inmarsat C no.: +870 773 1111 79

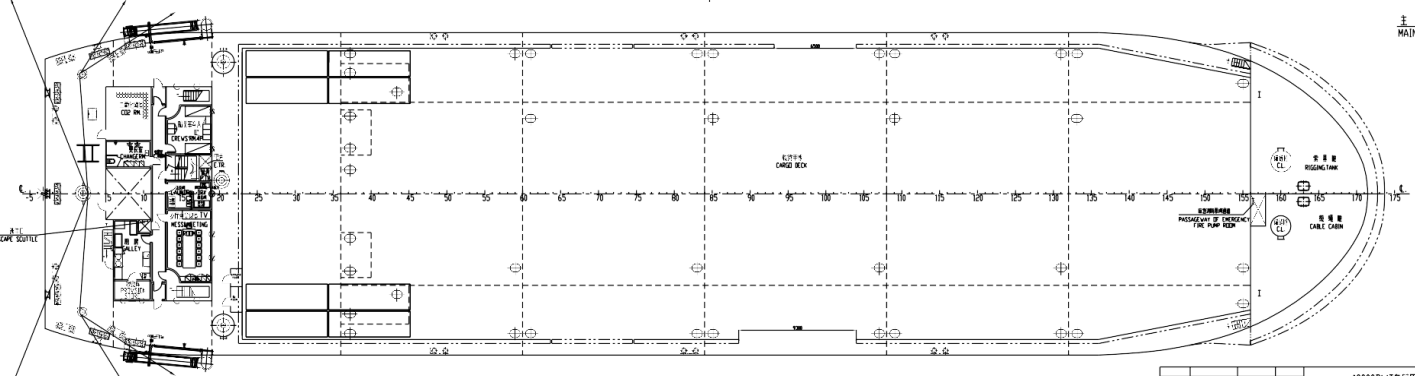
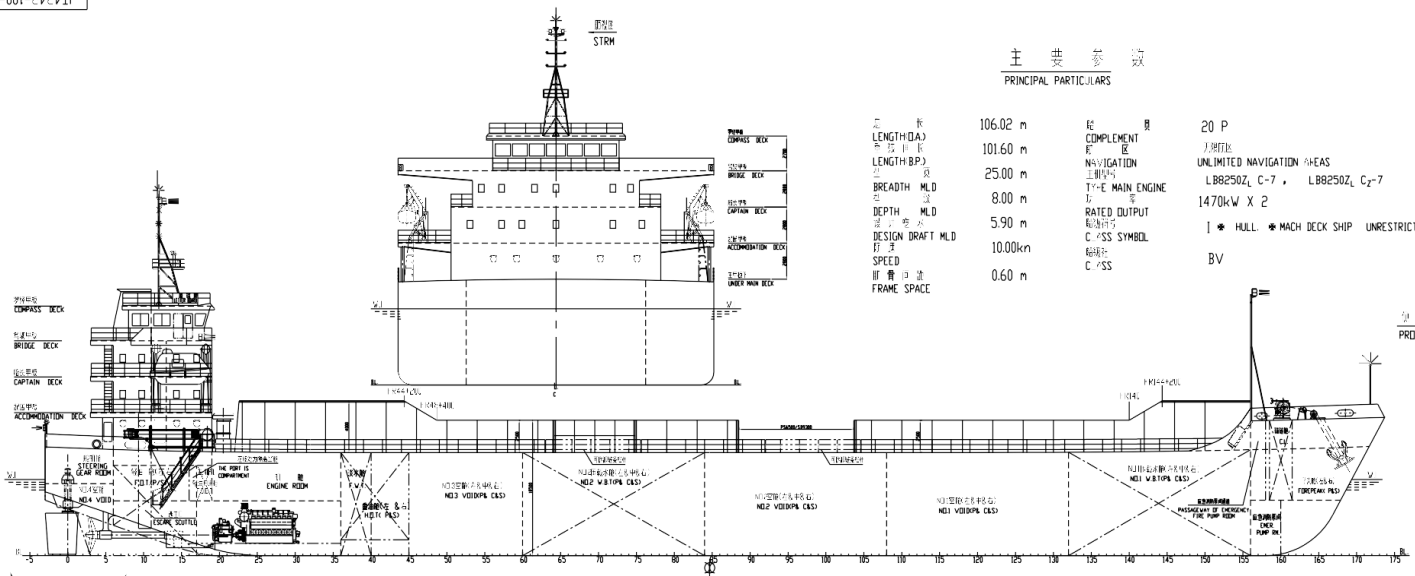
Inmarsat Fax no.: +870 783 1124 91

Phone No. in UAE: TBI

*This vessel specification is given in good faith & assumed to be correct. Details given are without guarantee. Owners reserved the right to amend the specifications without notification*

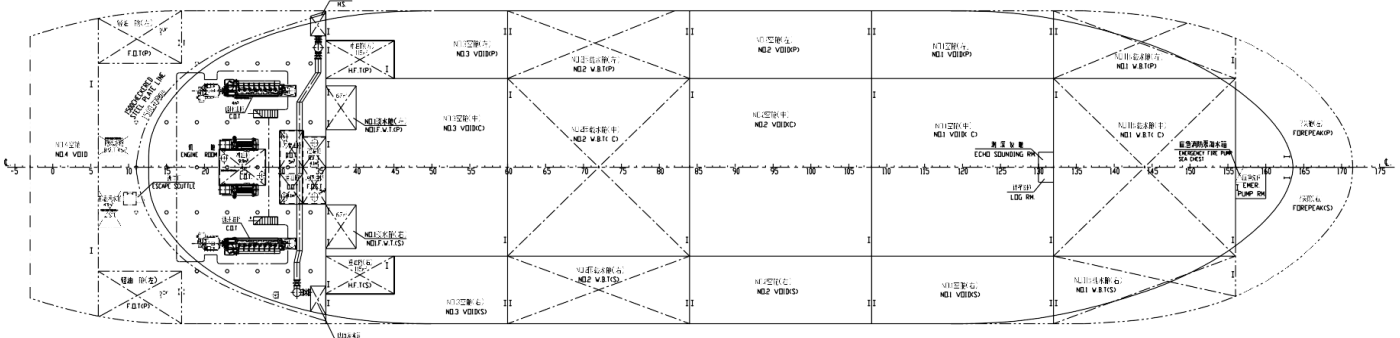
主 要 参 数  
PRINCIPAL PARTICULARS

总长 (LENGTH O/A)	106.02 m	吃水 (DEPTH)	20 P
船长 (LENGTH B/P)	101.60 m	航行 (NAVIGATION)	UNLIMITED NAVIGATION
船宽 (BREADTH MLD)	25.00 m	主机 (TYPE MAIN ENGINE)	LB8250Z, C-7, LB8250Z, C-7
型深 (DEPTH MLD)	8.00 m	额定功率 (RATED OUTPUT)	1470kW X 2
设计吃水 (DESIGN DRAFT MLD)	5.90 m	船名 (NAME)	1 * HULL * MACH DECK SHIP UNRESTRICTED NAVIGATION
总高 (TOTAL HEIGHT)	10.00 m	船级社 (CLASS SYMBOL)	BV
速度 (SPEED)	0.60 m	船级社 (CLASS)	

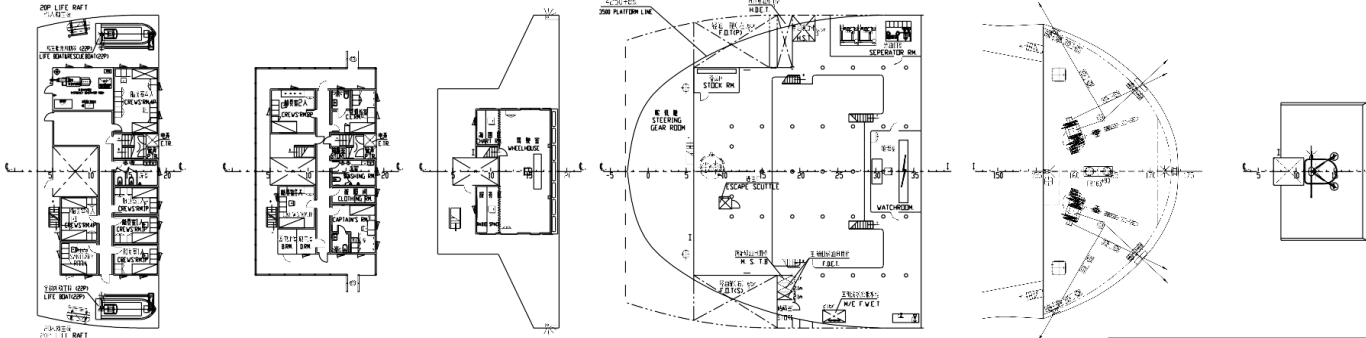


10000DWT自航驳船 10000 DWT SELF-PROPELLED BARGE	
GENERAL ARRANGEMENT PLAN	
设计单位 江苏金泰船舶设计有限公司 JIANGSU JINTAI SHIP DESIGN CO., LTD.	图号 JT4-4-100-0-0
设计日期 2014.07.01	比例 1:100
设计人员 王明	审核 王明

底 部  
BILGE



住 宅 甲 板 ACCOMMODATION DECK  
 船 长 甲 板 CAPTAIN DECK  
 轮 机 甲 板 BRIDGE DECK  
 4250 平台 4250 PLATFORM  
 正 机 甲 板 FORECASTLE DECK  
 罗 经 甲 板 COMPASS DECK



10000DWT自航驳船 10000 DWT SELF-PROPELLED BARGE	
GENERAL ARRANGEMENT PLAN	
设计单位 江苏金泰船舶设计有限公司 JIANGSU JINTAI SHIP DESIGN CO., LTD.	图号 JT4-4-100-0-0
设计日期 2014.07.01	比例 1:100
设计人员 王明	审核 王明